



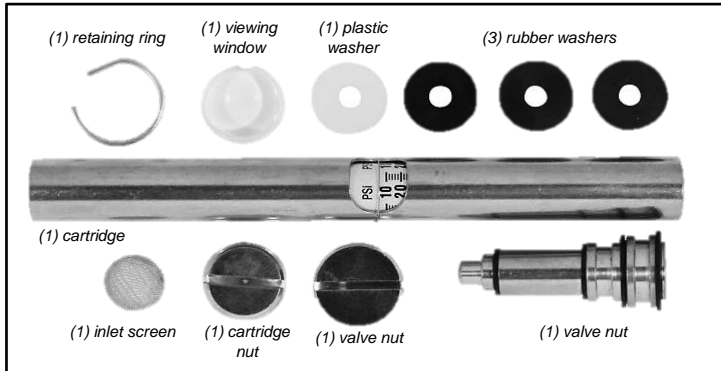
507B Inflator Gage Overhaul Kit

For Milton Inflator Gages:

08-A1-506	s-504	518
98-A1-501	s-505	550
501	s-506	552
502	s-516	553
503	517	556



Kit includes (1) 507A Cartridge Kit, (1) 512A Valve Kit, (1) 506-79A Window Kit, (1) inlet screen, (1) valve nut and (1) cartridge nut



Section #1 – Replace Inlet Screen



STEP #1 – Disconnect inflator gage from air supply

NEVER WORK ON INFLATOR GAGE UNDER PRESSURE



STEP #2 – Remove plug from end of inflator gage



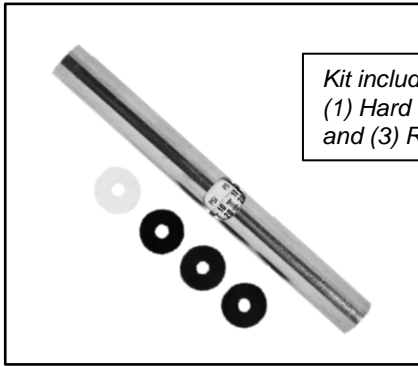
STEP #3 – Remove old inlet screen by prying out with small blade screwdriver

TIP – after removing inlet screen, tap end of inflator gage on hard surface to remove any debris



STEP #4 – Insert new inlet screen and gently seat into place with small blade screwdriver

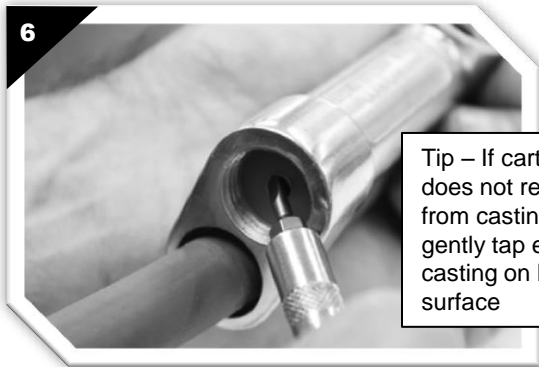
Section #2 – 507A Kit Replace Cartridge



*Kit includes (1) Cartridge,
(1) Hard Plastic Washer,
and (3) Rubber Washers*



STEP #5 – Remove nut with large blade screwdriver by turning counter-clockwise



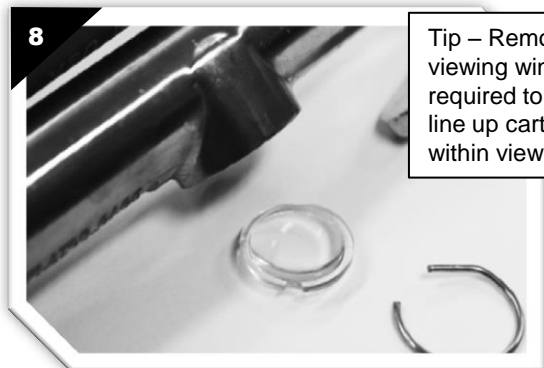
Tip – If cartridge does not release from casting, gently tap end of casting on hard surface

STEP #6 – Remove top washer, rubber washer and turn gage upside to release cartridge. Discard existing washers



Tip – Remove any debris that may have accumulated inside the casting

STEP #7 – Use small blade screwdriver or small pick to pry retaining ring from inside viewing window cavity



Tip – Removal of viewing window is required to properly line up cartridge within view

STEP #8 – Remove viewing lens



STEP #9 – Insert new cartridge into casting with numbers facing toward handle

Section #2 – 507A Kit Replace Cartridge (cont)



STEP #10 – NOTE – if cartridge numbers fall below viewing window, remove and add 1 or 2 additional washers until lined up correctly



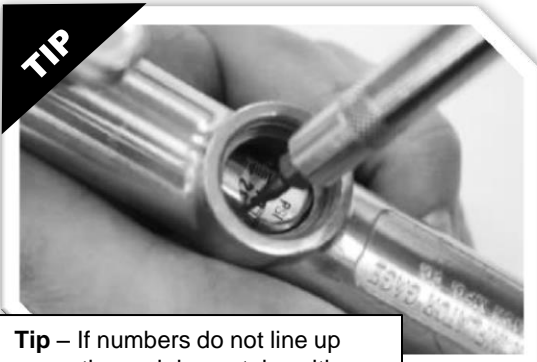
STEP #11 – Insert black rubber first and then hard plastic washer



STEP #12 – Thread casting nut and hand tighten only



STEP #13 – Check that numbers line up within the viewing window

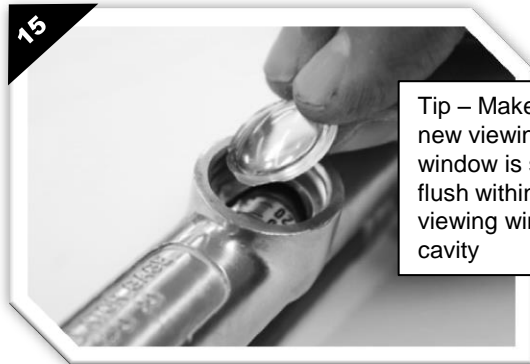


Tip – If numbers do not line up correctly, push brass tube with small blade screwdriver to rotate brass tube



STEP #14 – Use large bladed screwdriver to tighten casting nut securely

Section #3 – 506-79A Viewing Window Kit



STEP #15 – Install new viewing window with bevel side up

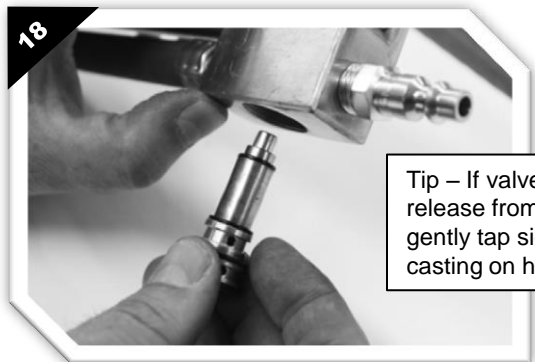


STEP #16 – Insert new plastic viewing window and snap retaining ring into groove to hold viewing window in place

Section #4 – 512A Replacement Valve Kit



STEP #17 – Remove valve nut with large flat blade screwdriver and turn counter-clockwise



STEP #18 – Turn inflator gage upside down to release valve



STEP #19 – Insert new valve by pushing in all the way



STEP #20 – Replace nut and turn clockwise with large bladed screwdriver to tighten